

LCMC User Guide (sort of)

Rasto Levrinc

LCMC User Guide (sort of)

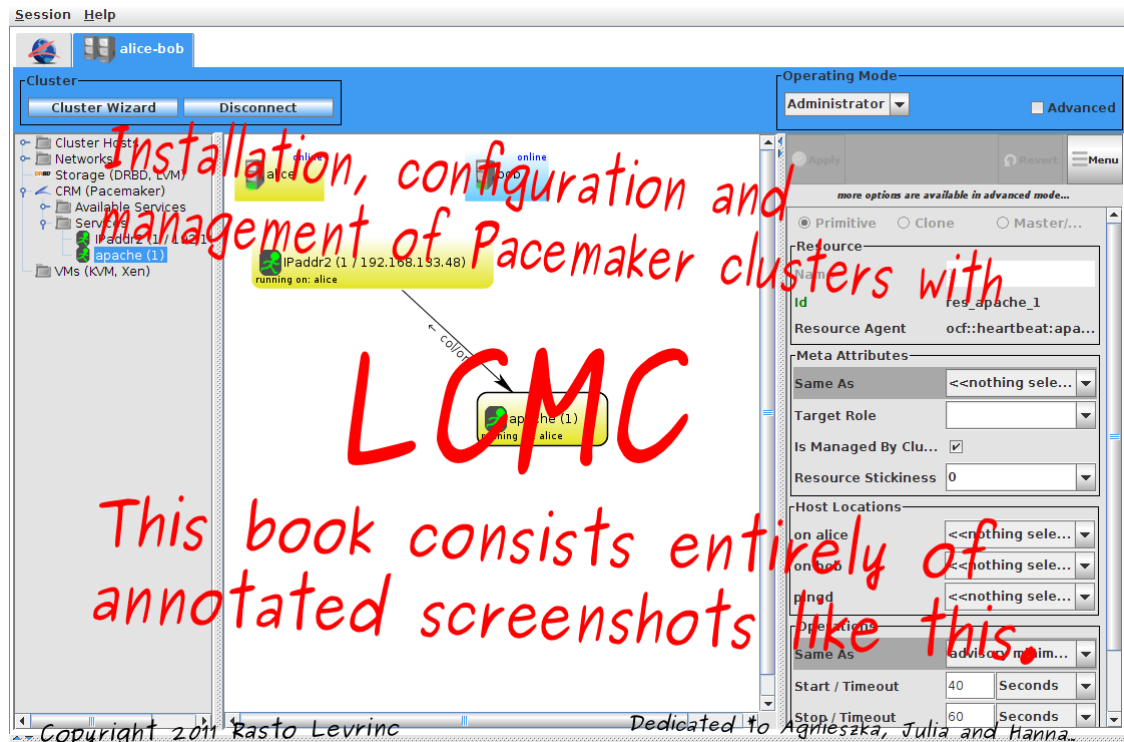
Rasto Levrinc

Copyright © 2011 Rastislav Levrinc

Table of Contents

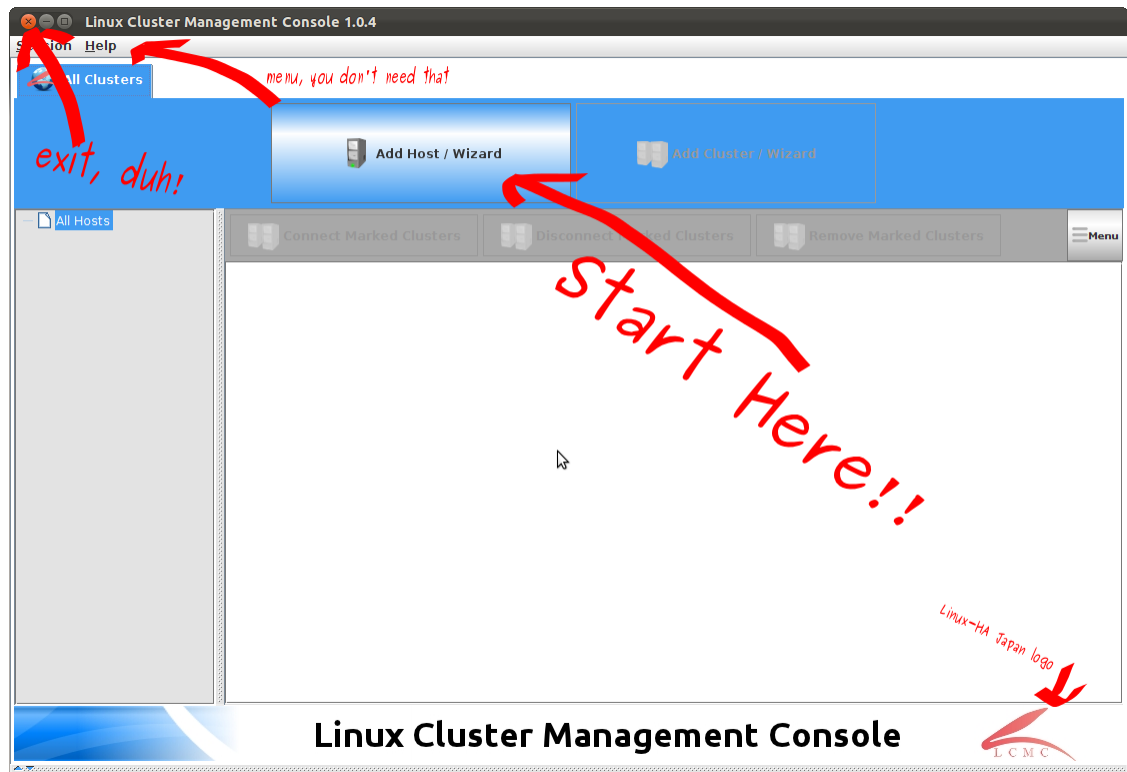
| | |
|---------------------------------------|----|
| Preface | iv |
| 1. Initial Setup | 1 |
| Start Here | 1 |
| Connecting to the Cluster | 2 |
| Collecting Info | 3 |
| Pacemaker/DRBD Installation | 3 |
| About Alice and Bob | 4 |
| Creating Cluster | 5 |
| Heartbeat Config | 7 |
| Corosync Config | 8 |
| Start Cluster Software | 10 |
| Finish Here | 11 |
| 2. Pacemaker | 12 |
| Pacemaker Starts | 12 |
| Pacemaker Online | 13 |
| Host Menu | 13 |
| Available Services | 14 |
| Maybe Start Here | 14 |
| Making Cluster IP | 15 |
| What-IF Machine / ptest | 16 |
| Configuring Apache | 16 |
| Back to STONITH | 18 |
| Start Cluster Software Manually | 19 |
| 3. Making of LCMC User Guide | 20 |

Preface

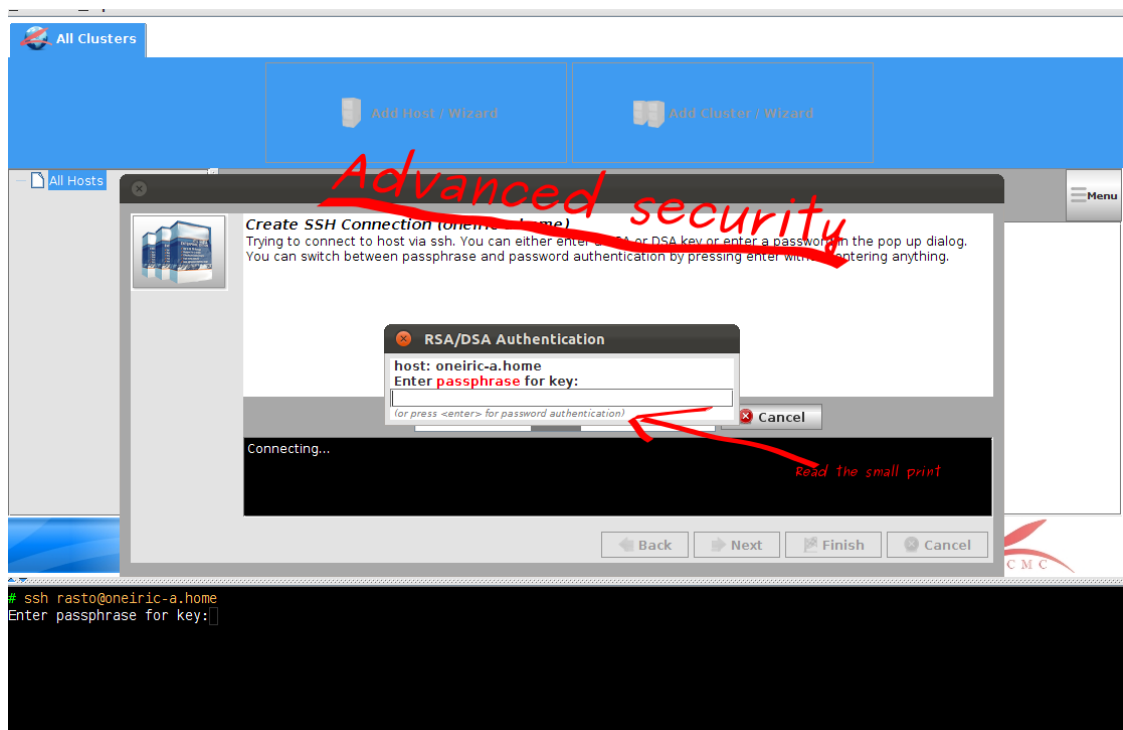


Chapter 1. Initial Setup

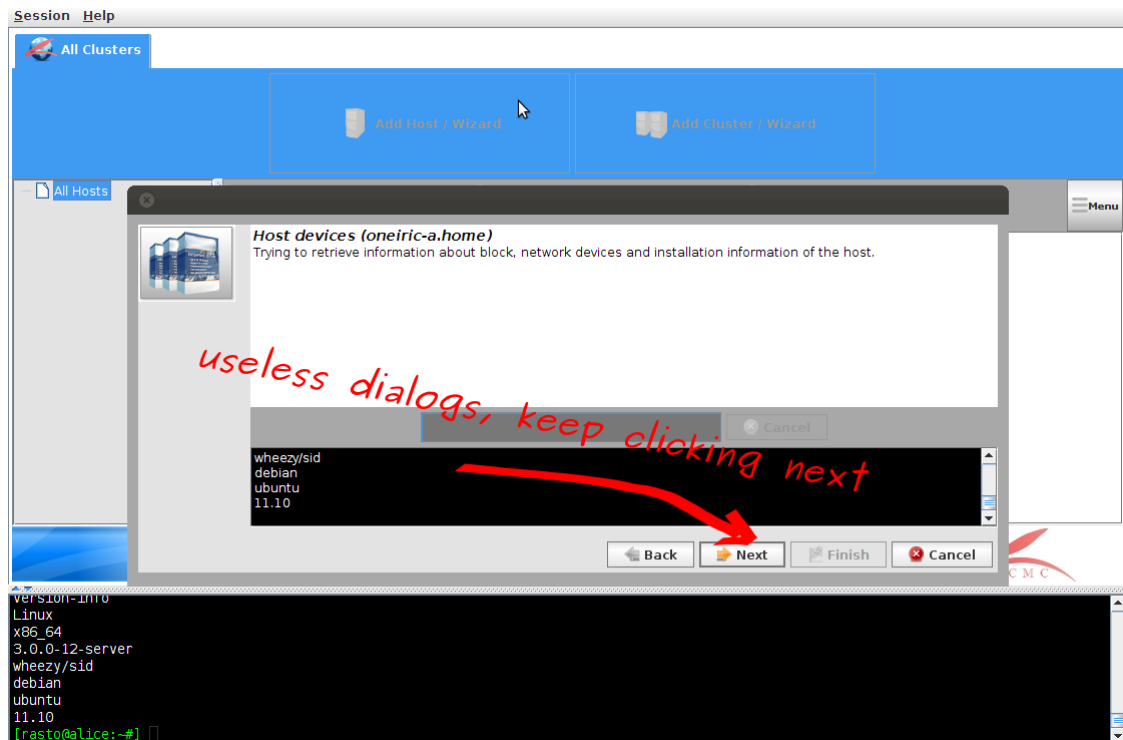
Start Here



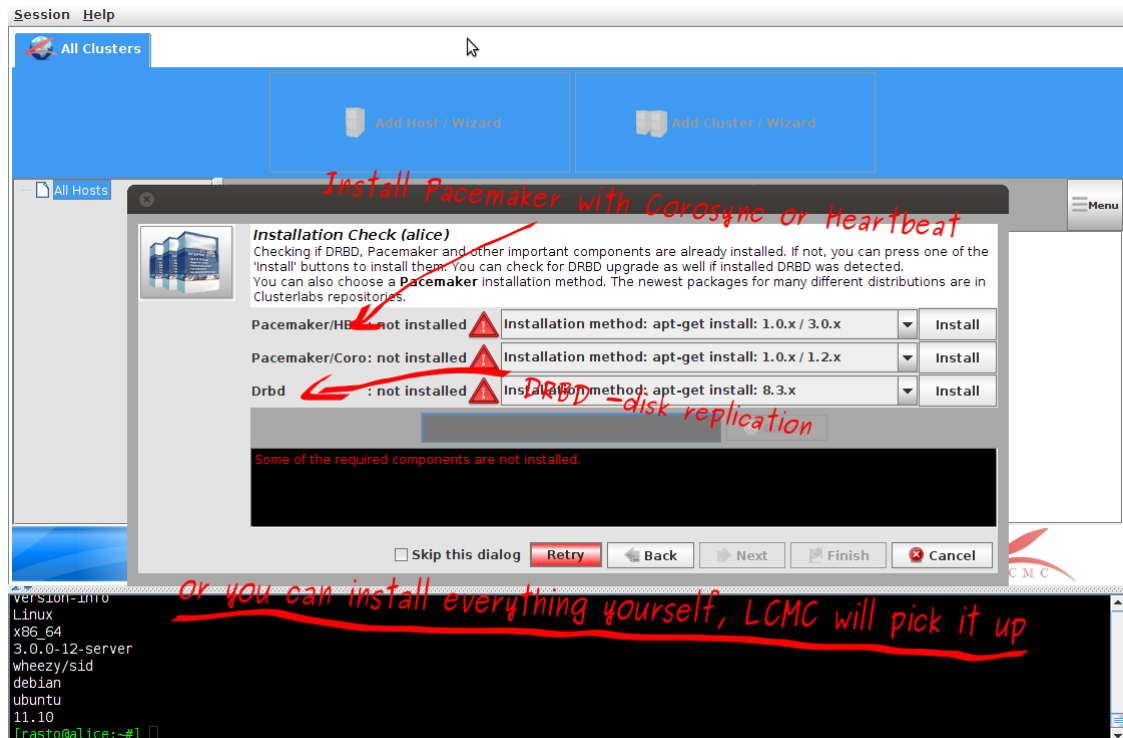
Connecting to the Cluster

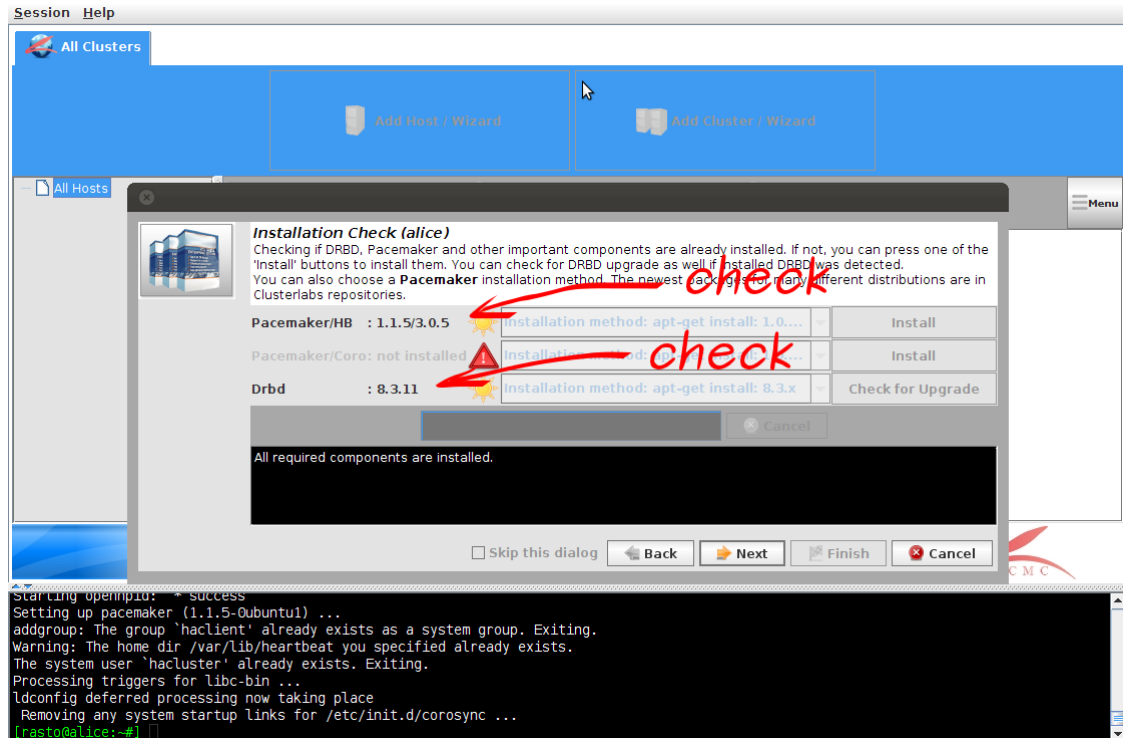


Collecting Info

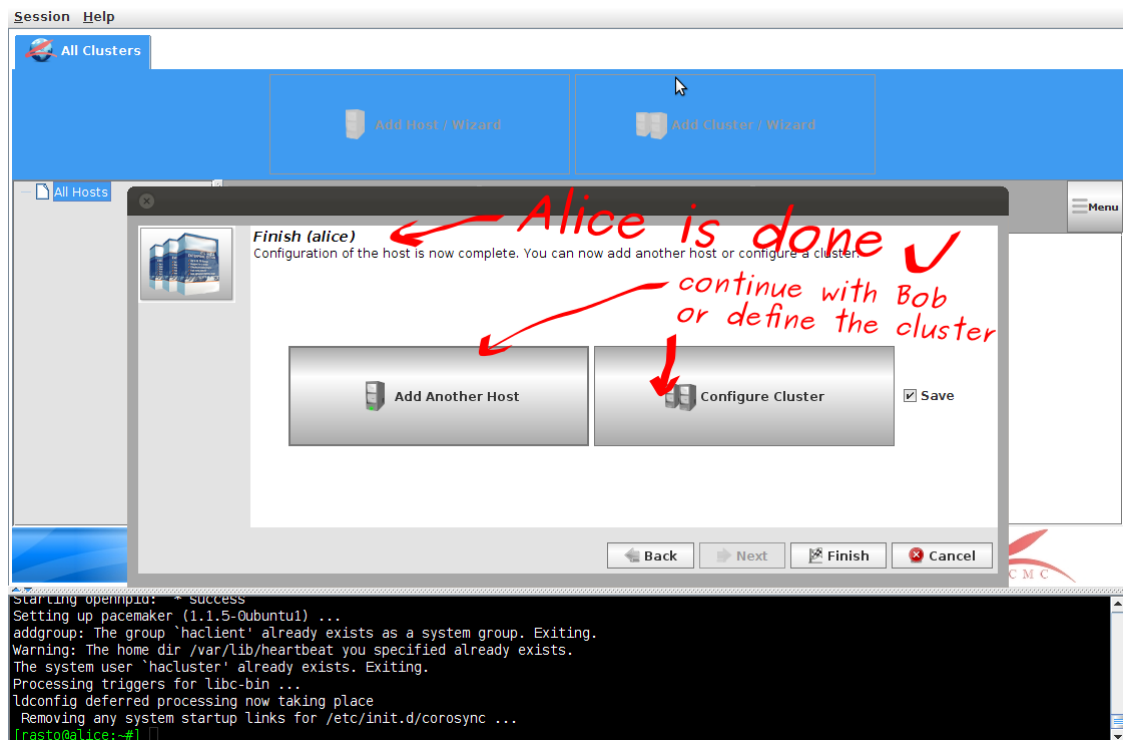


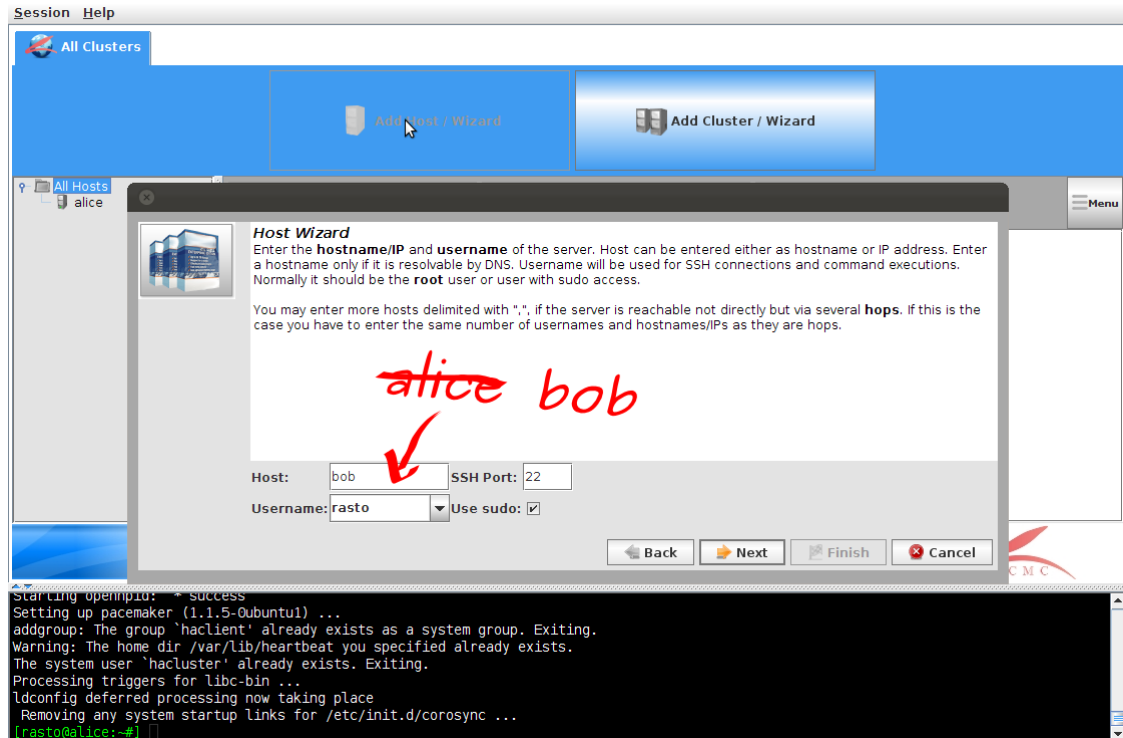
Pacemaker/DRBD Installation



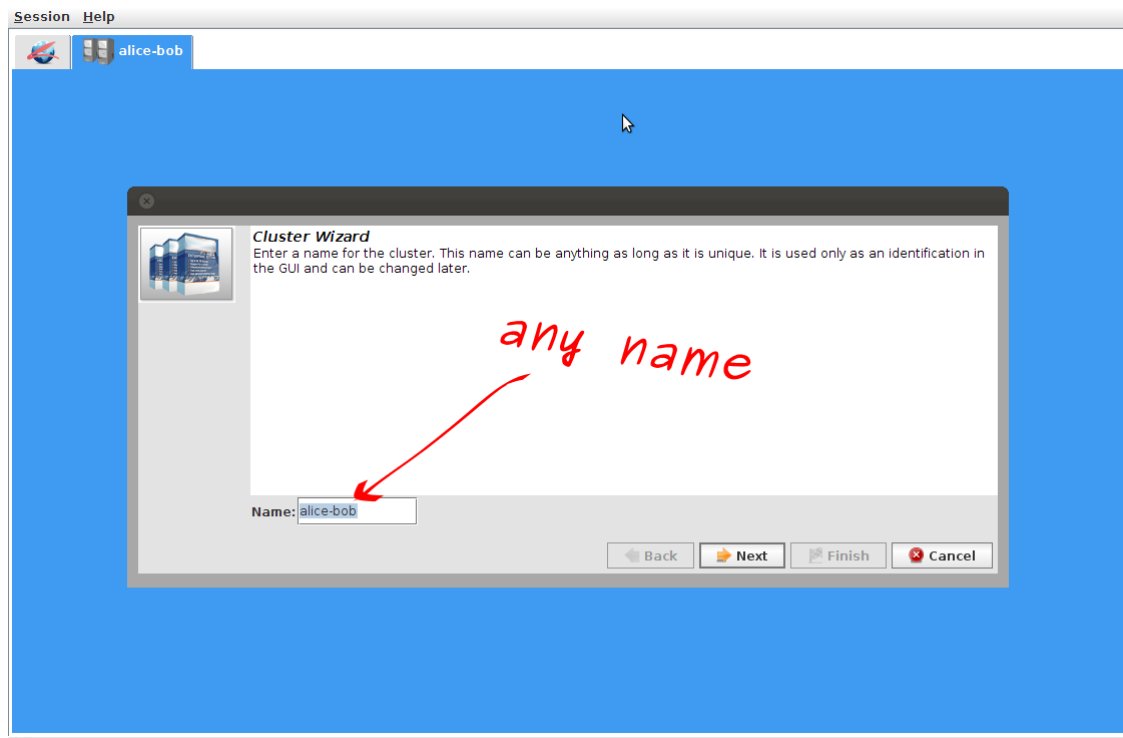


About Alice and Bob

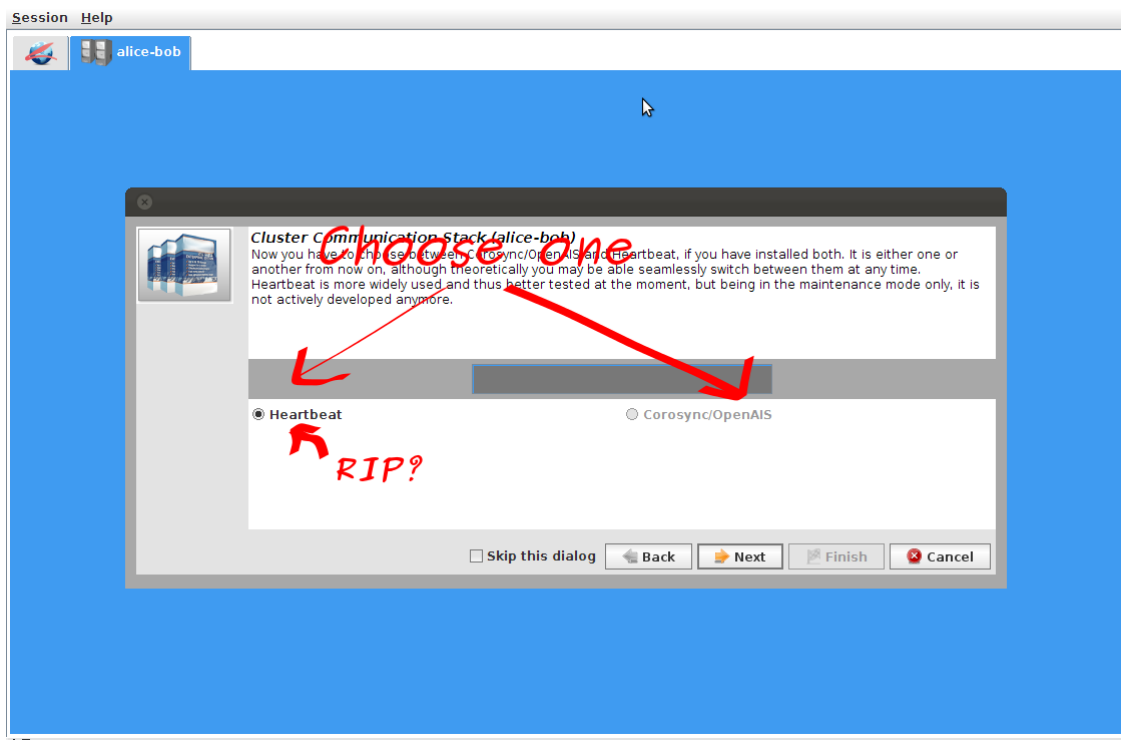
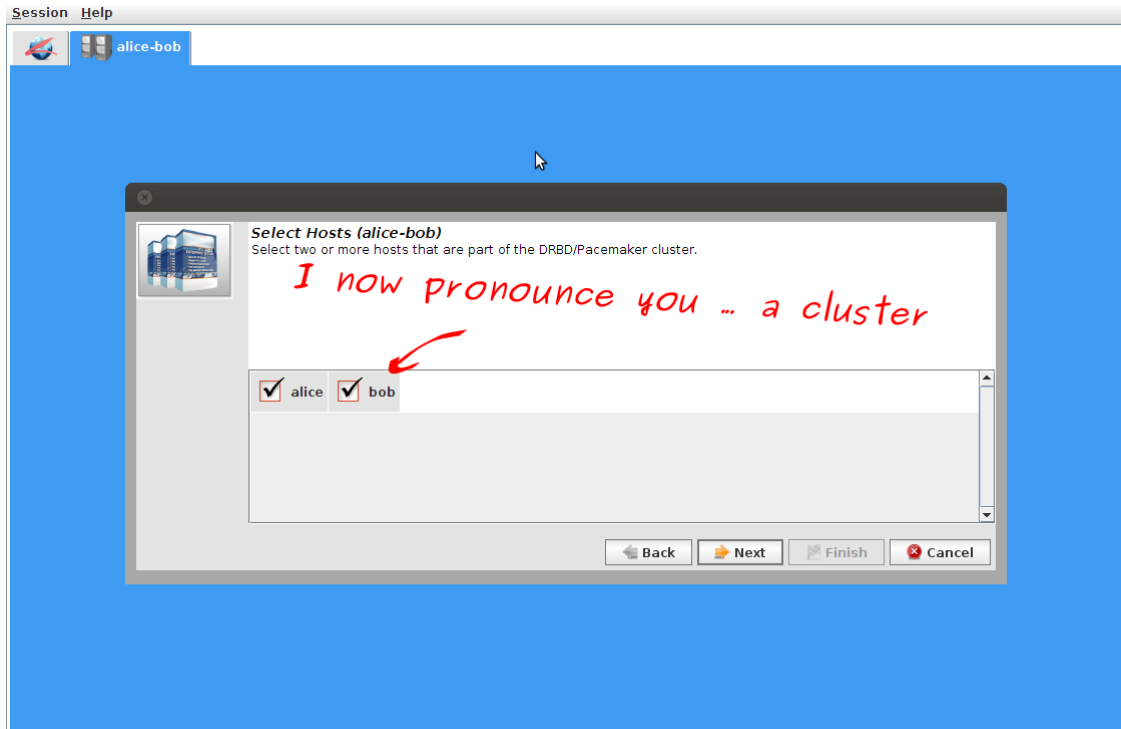




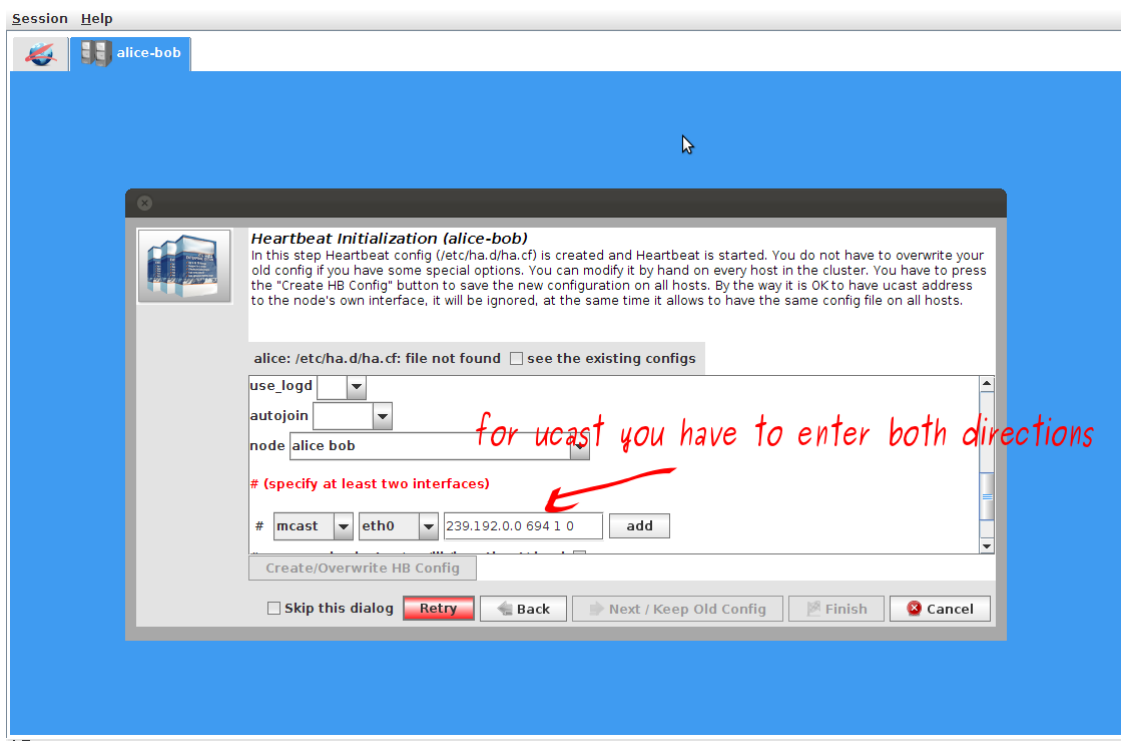
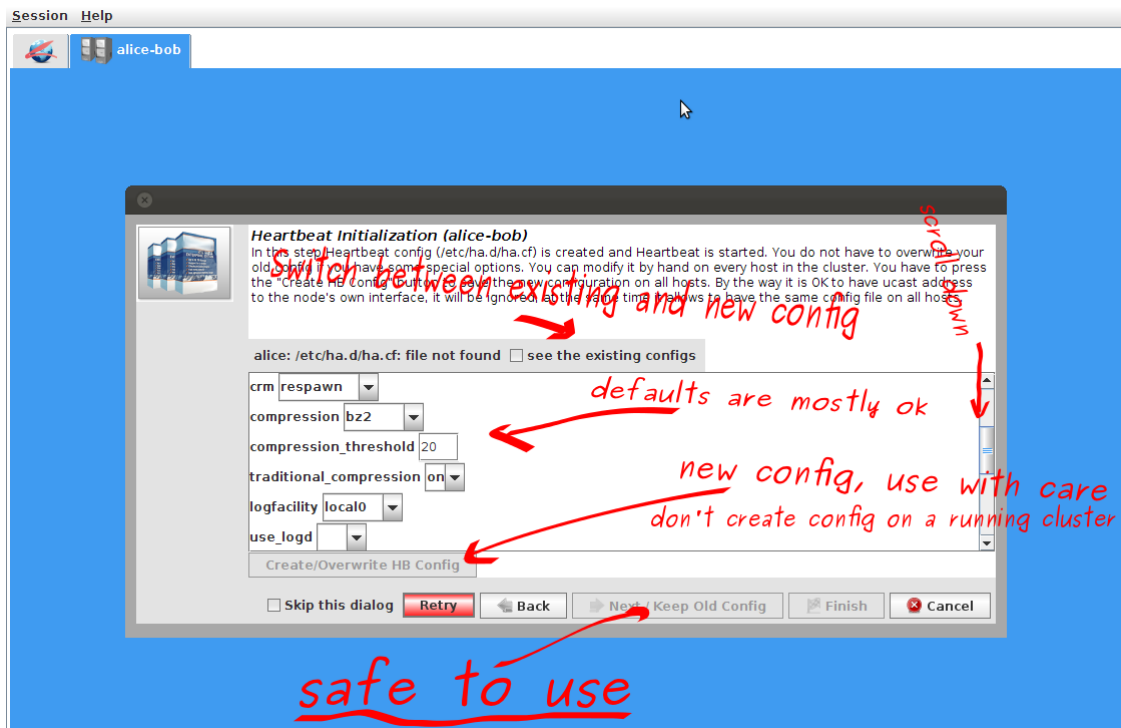
Creating Cluster

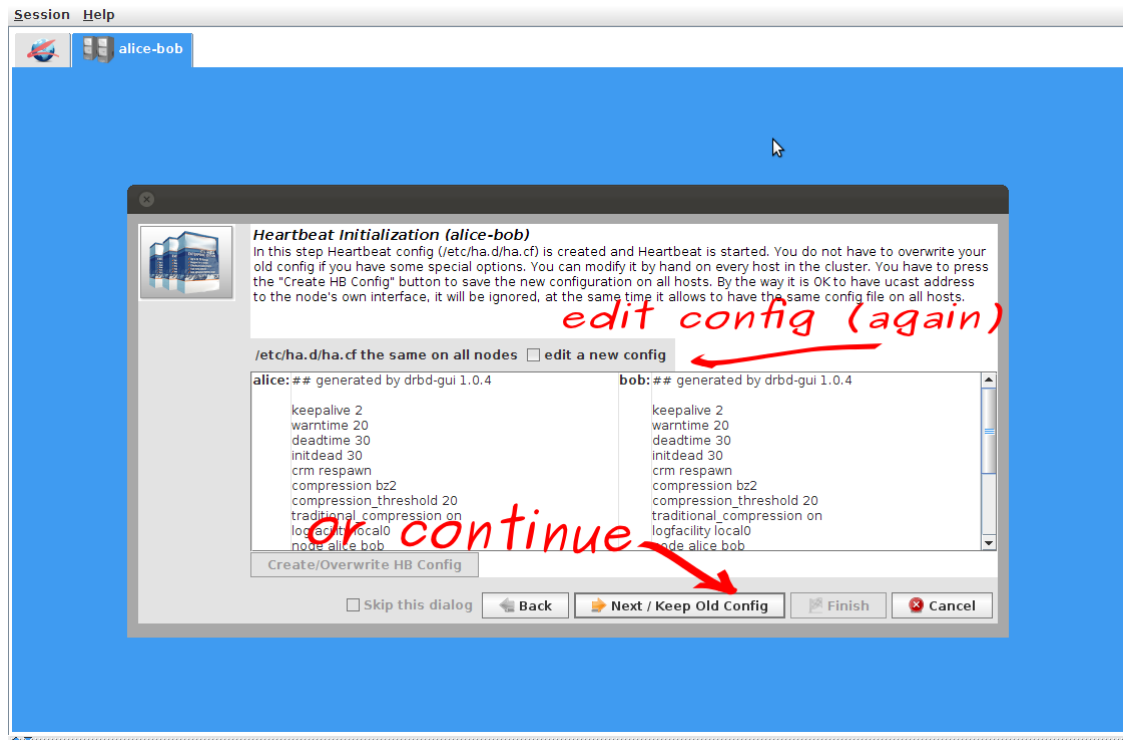


Initial Setup

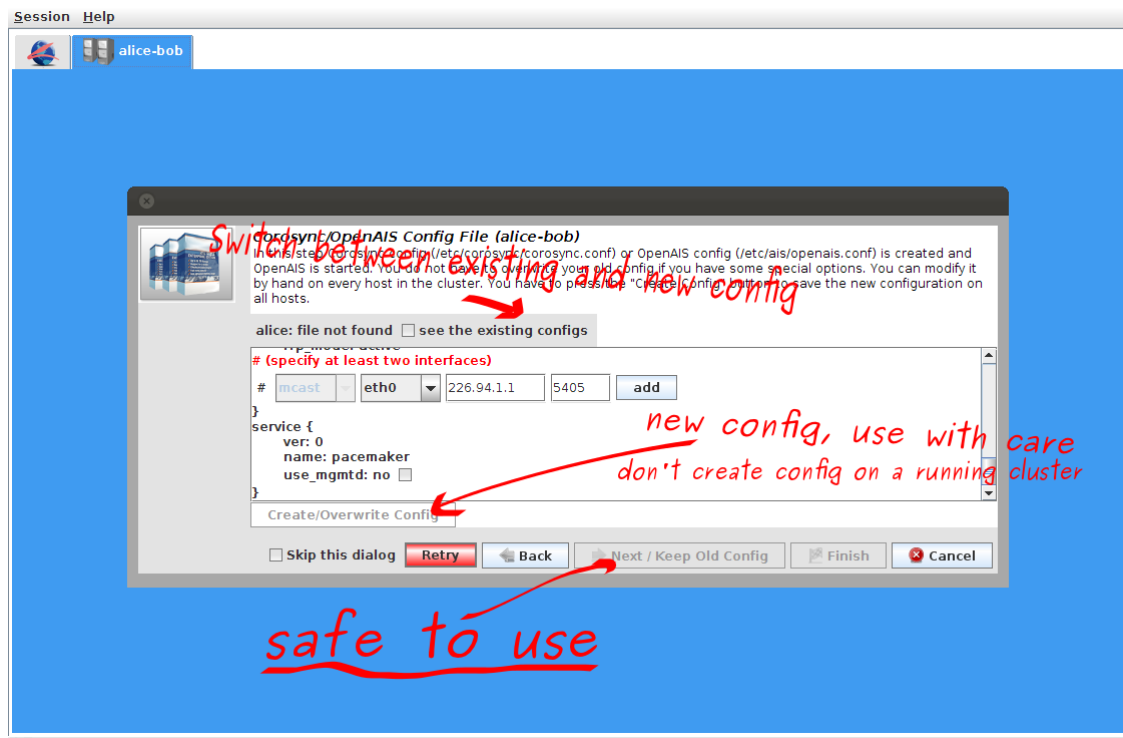


Heartbeat Config

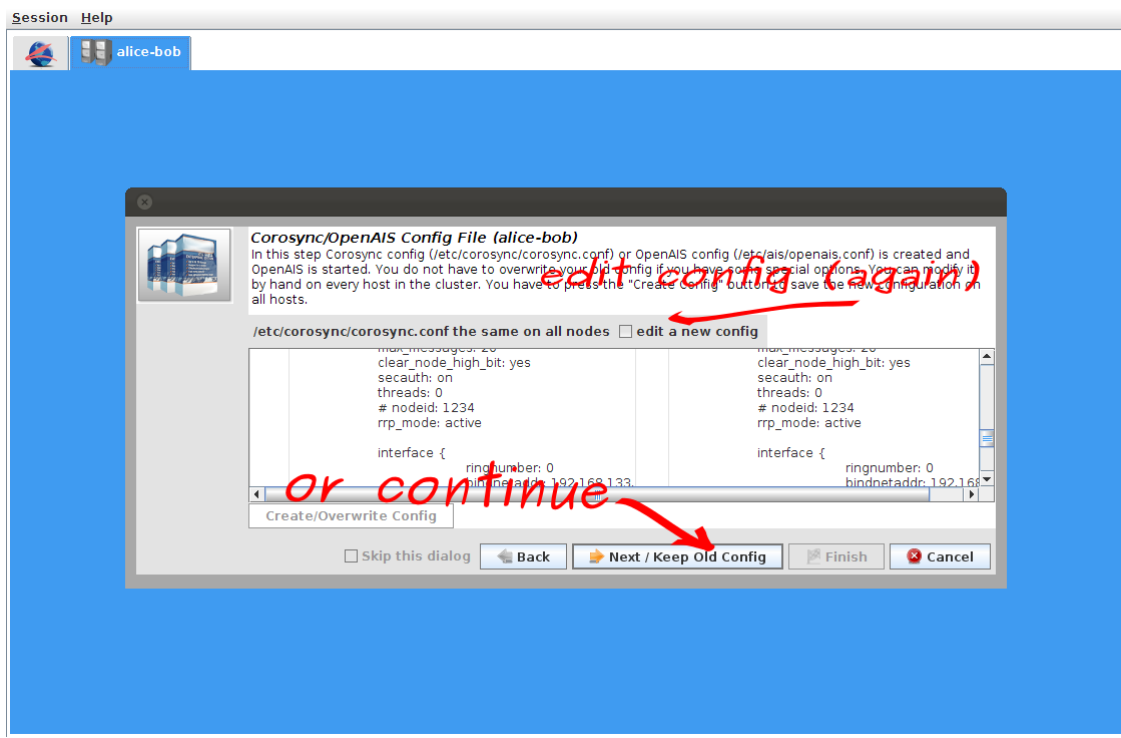
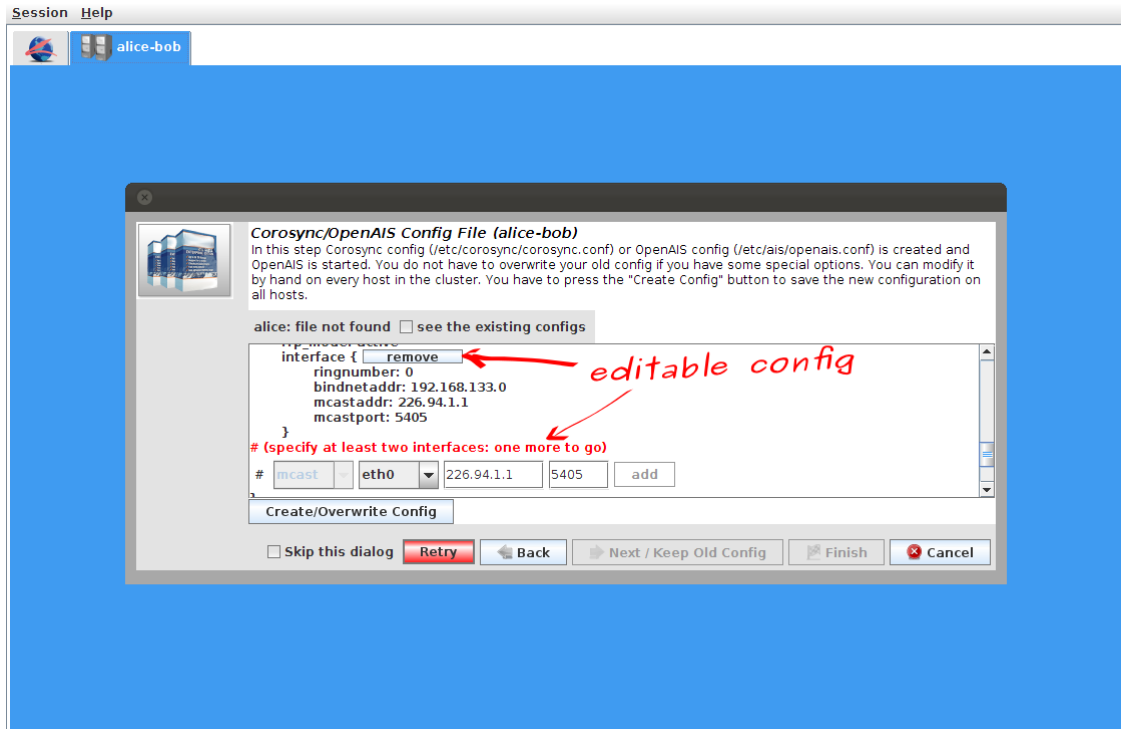




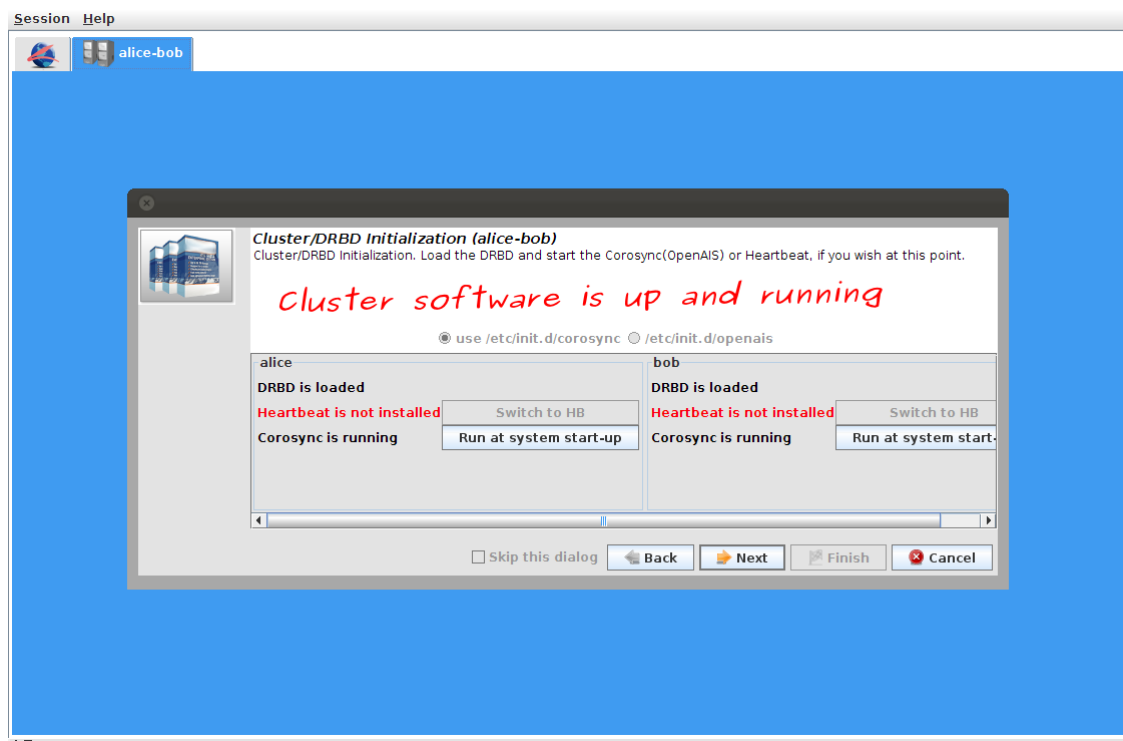
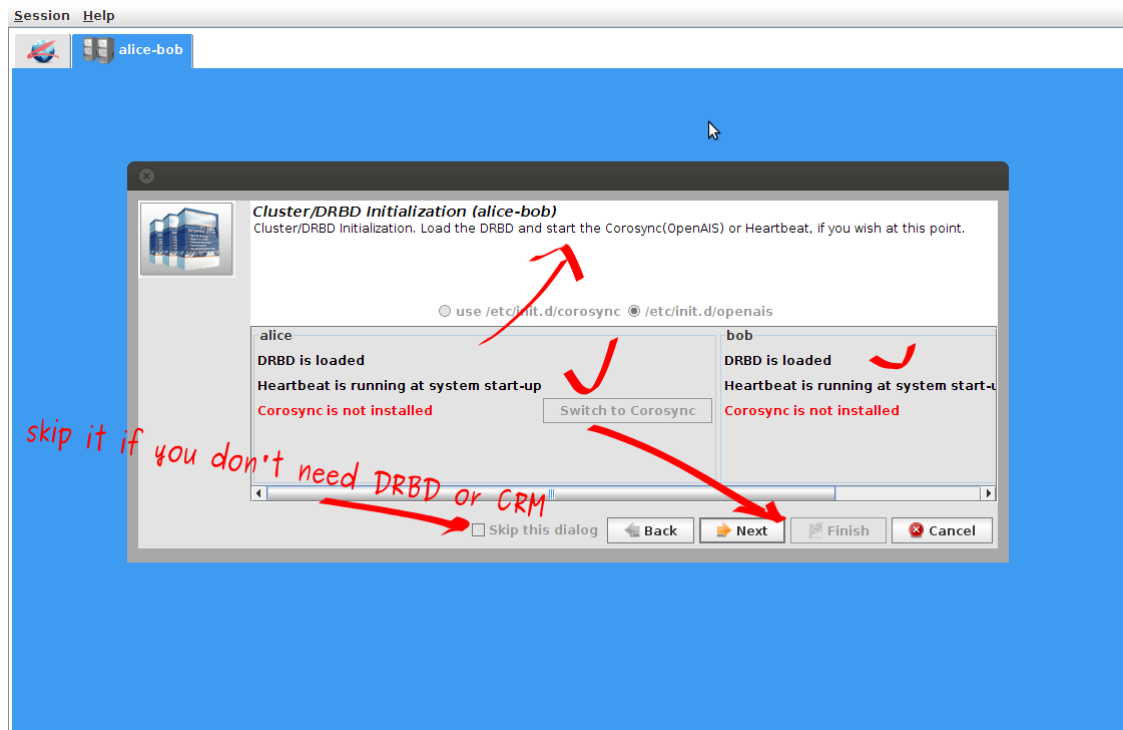
Corosync Config



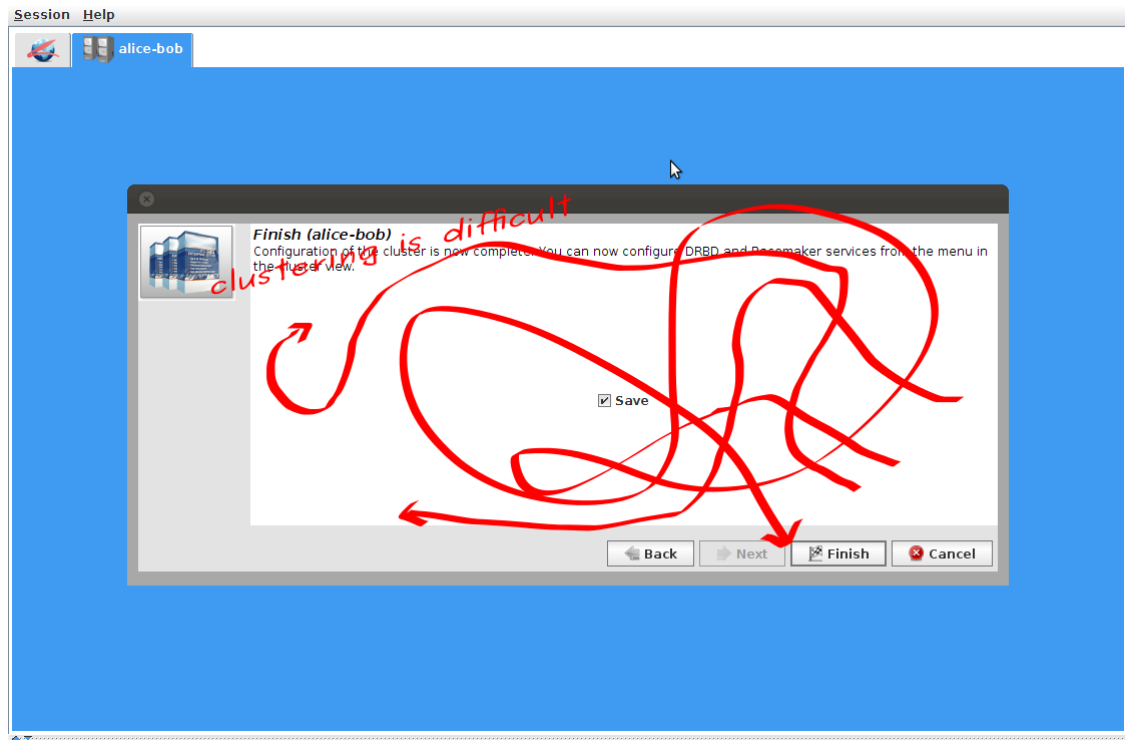
Initial Setup



Start Cluster Software

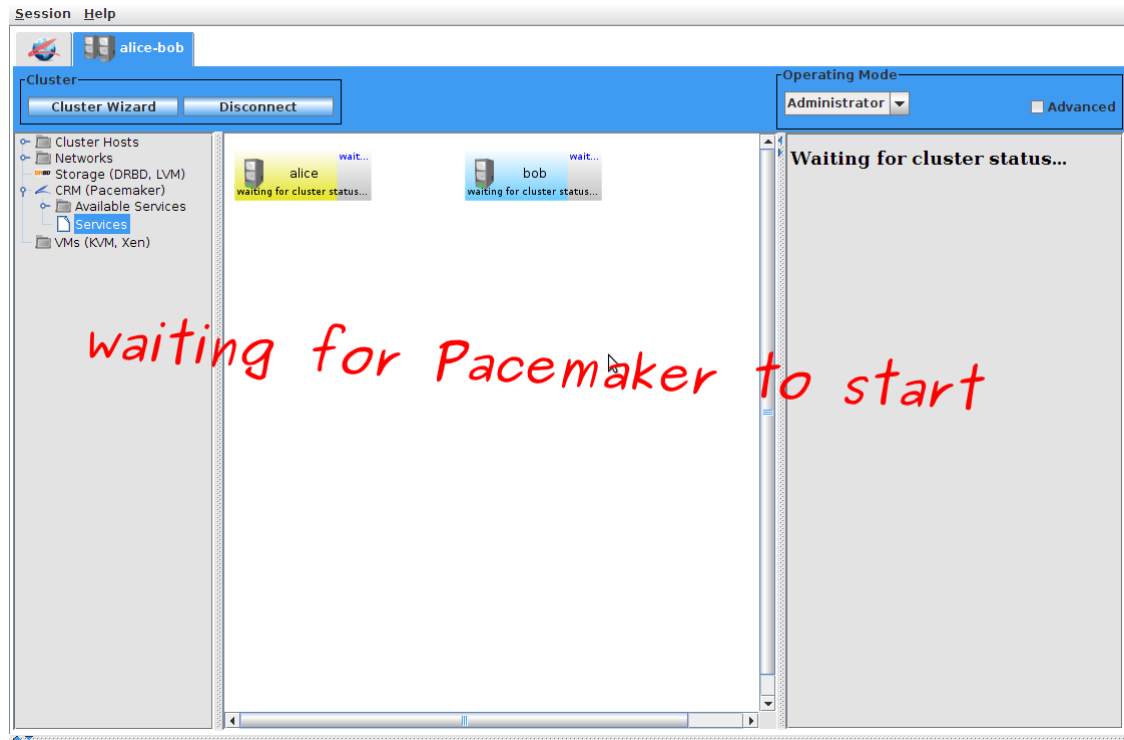


Finish Here

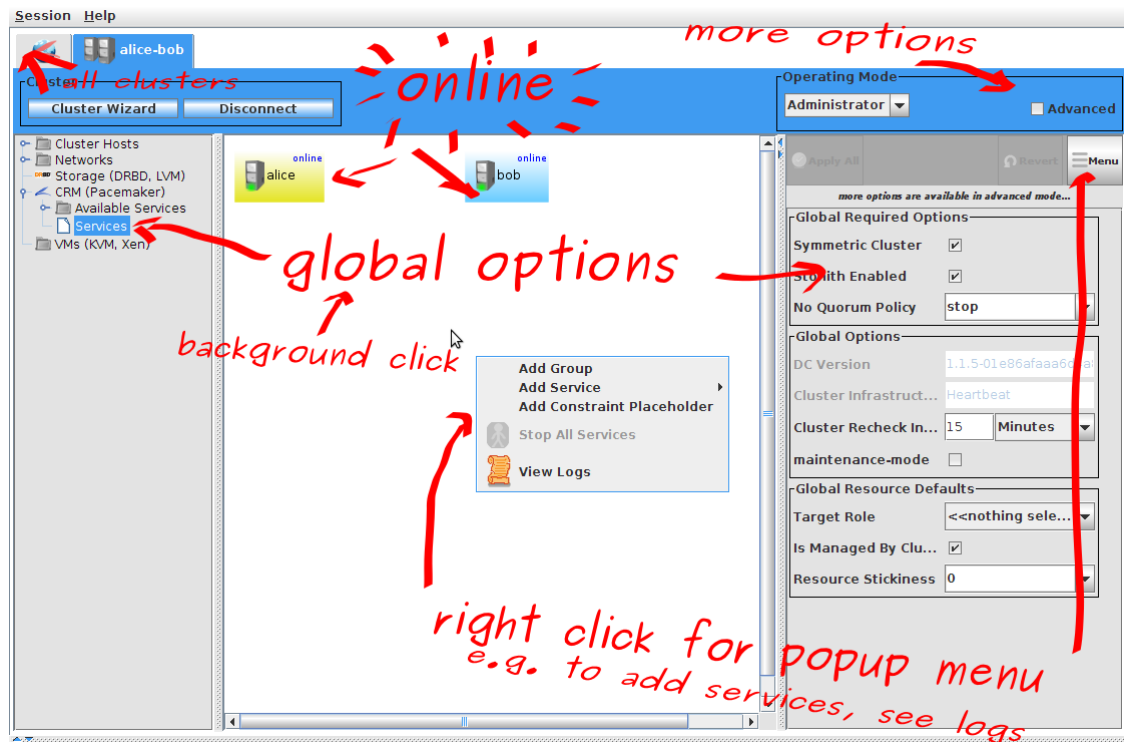


Chapter 2. Pacemaker

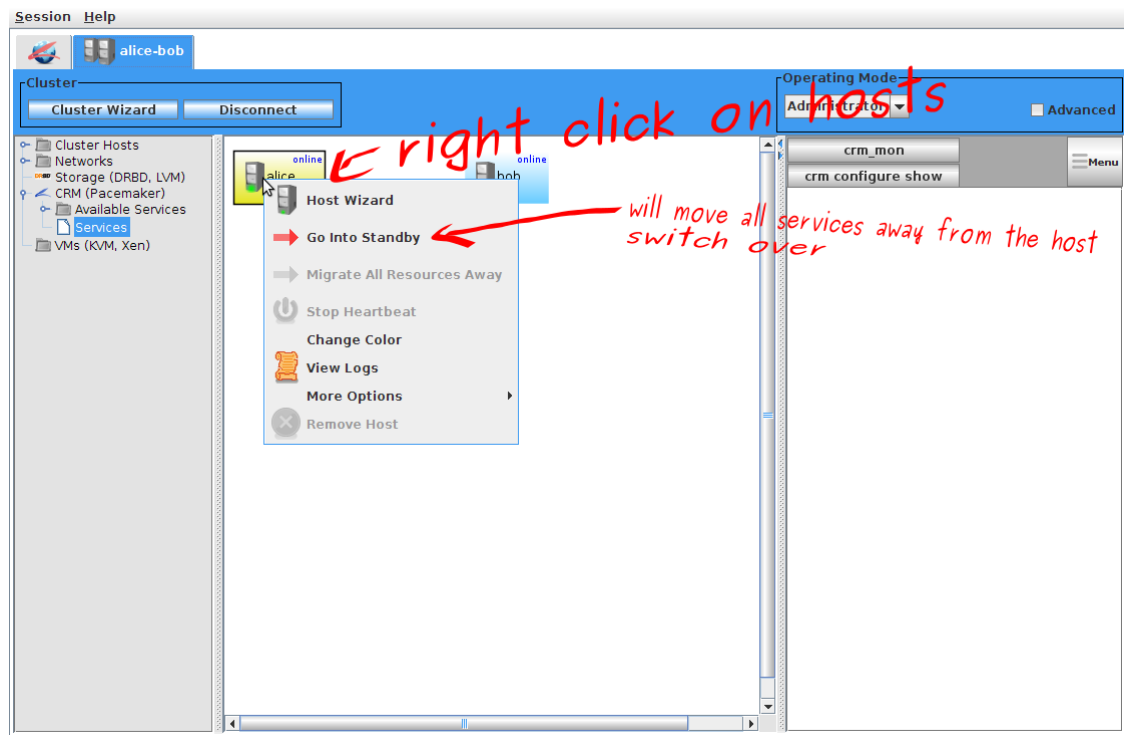
Pacemaker Starts



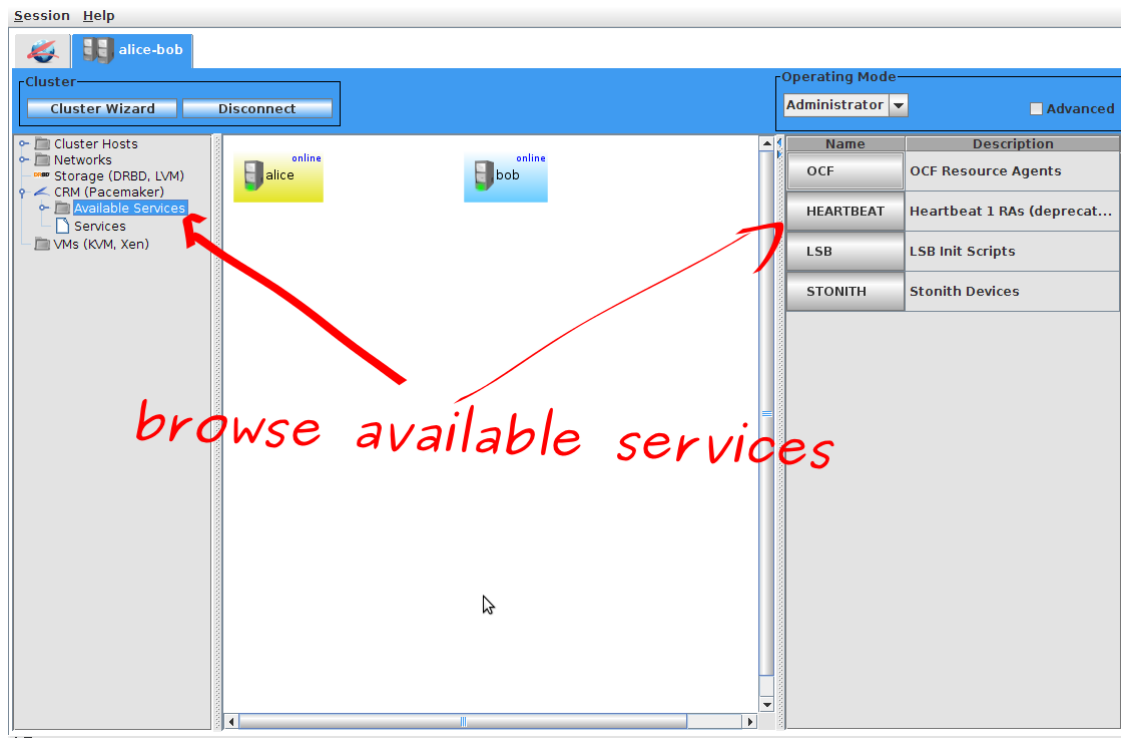
Pacemaker Online



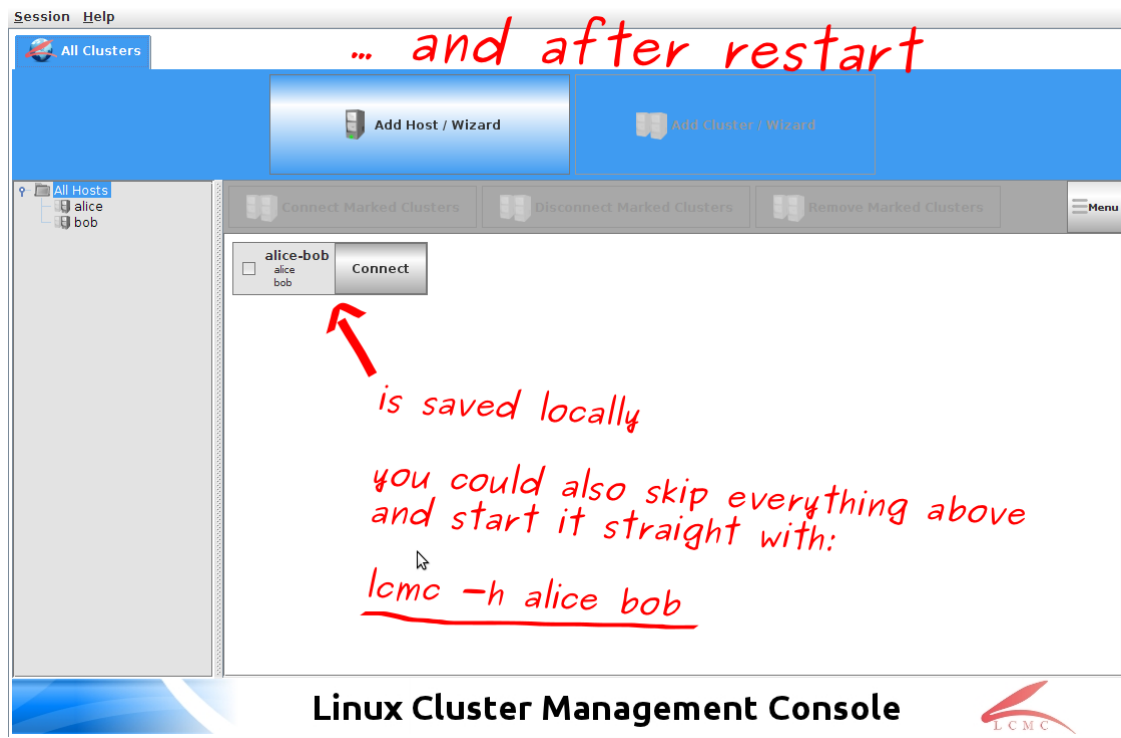
Host Menu



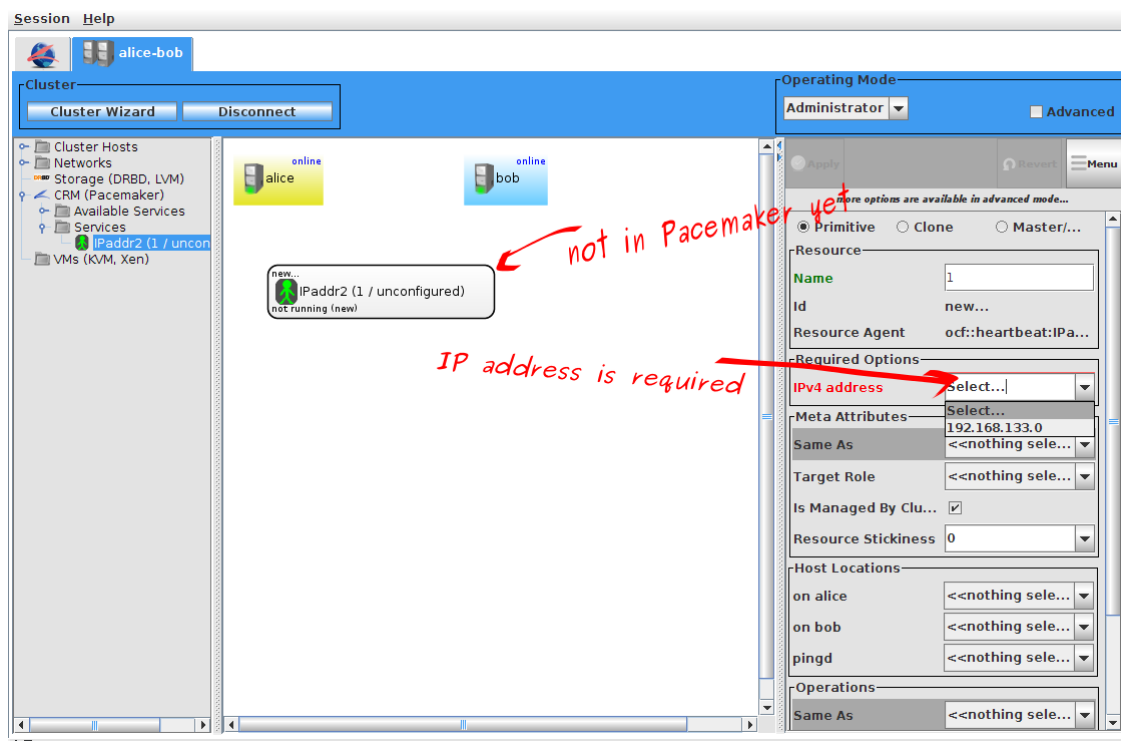
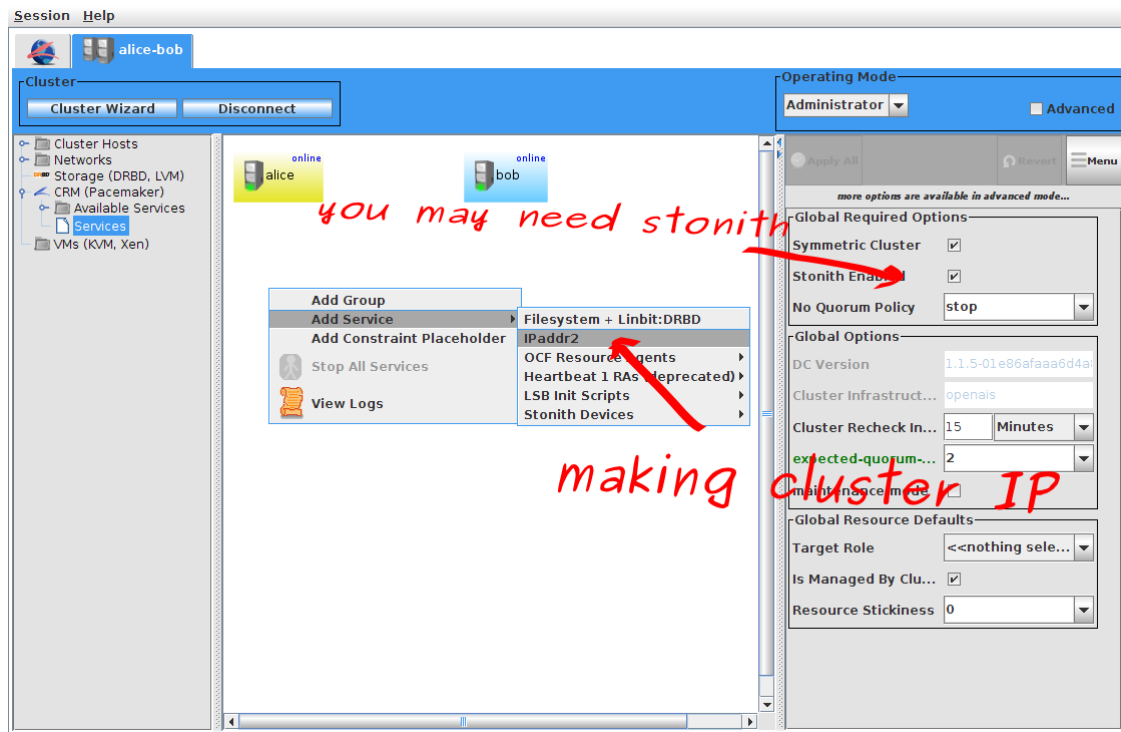
Available Services



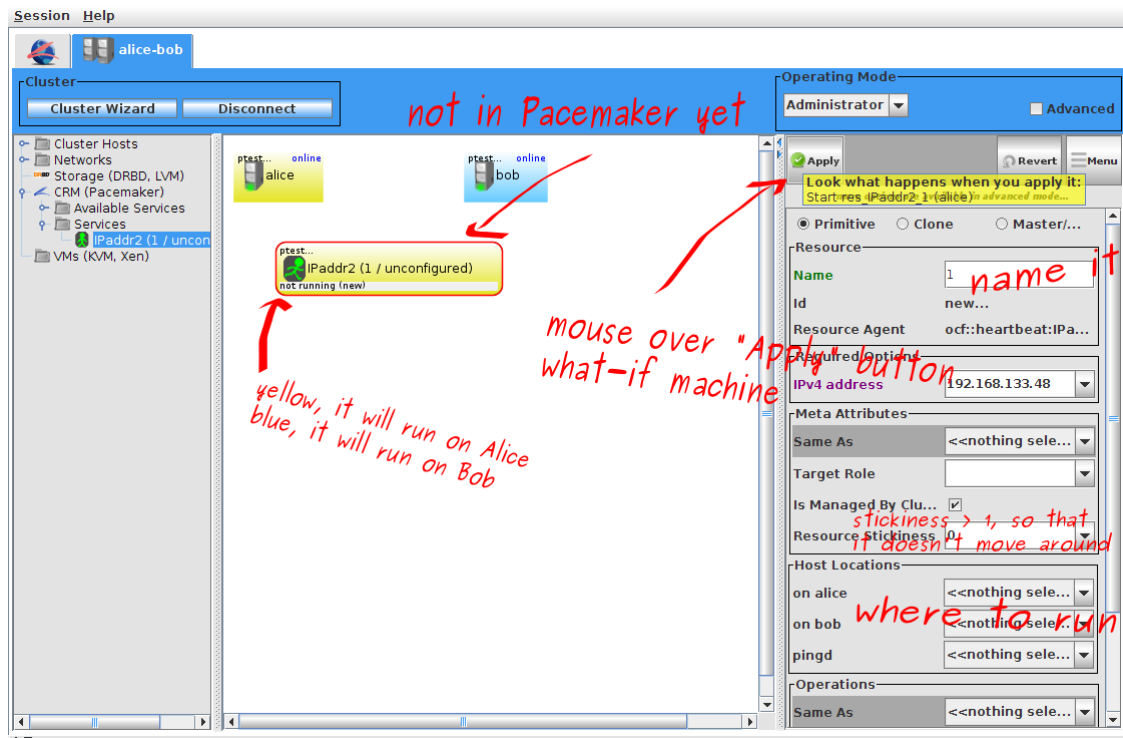
Maybe Start Here



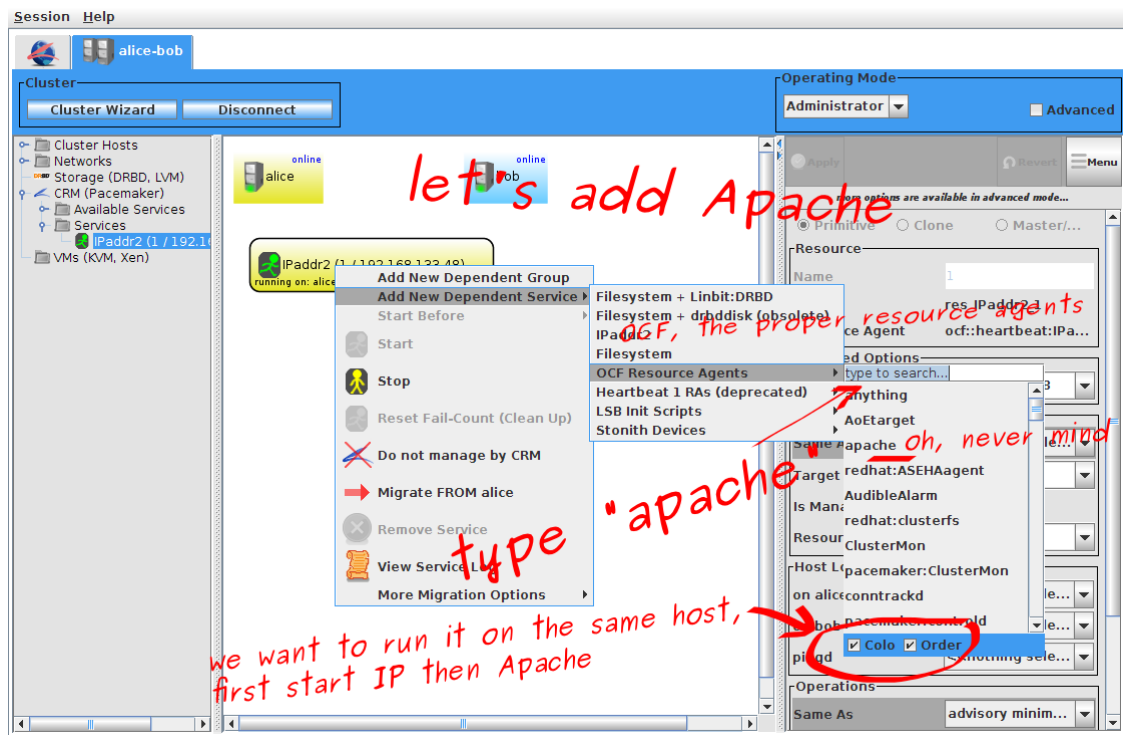
Making Cluster IP

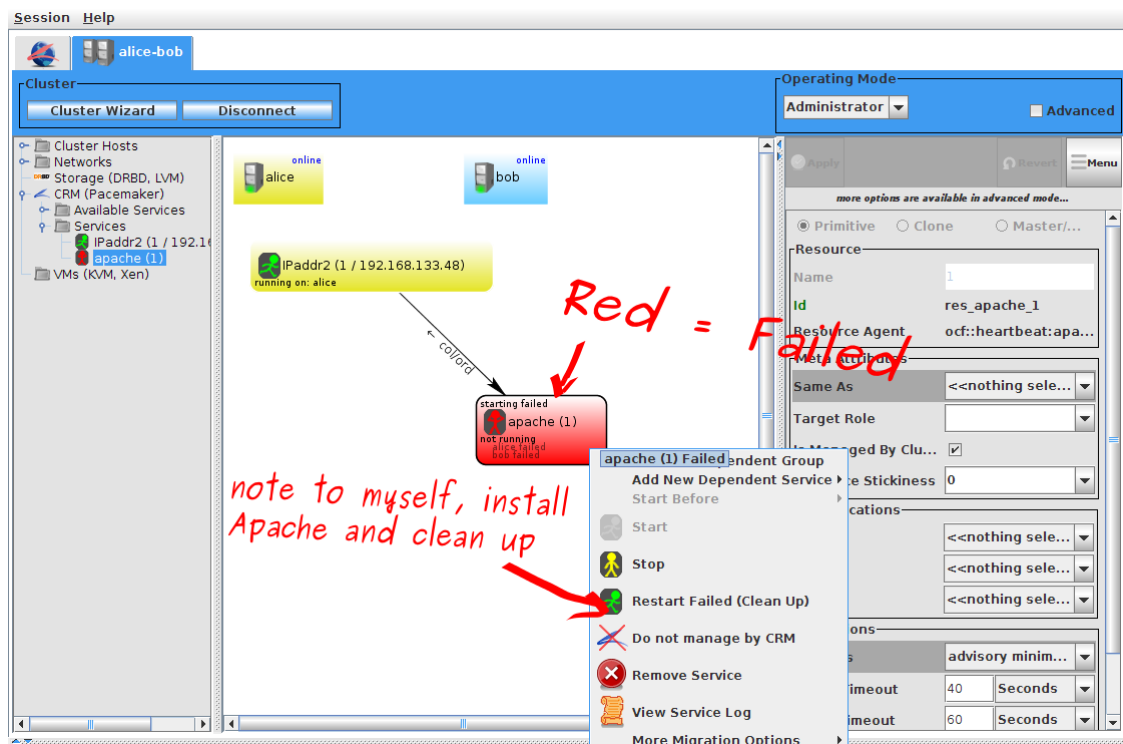
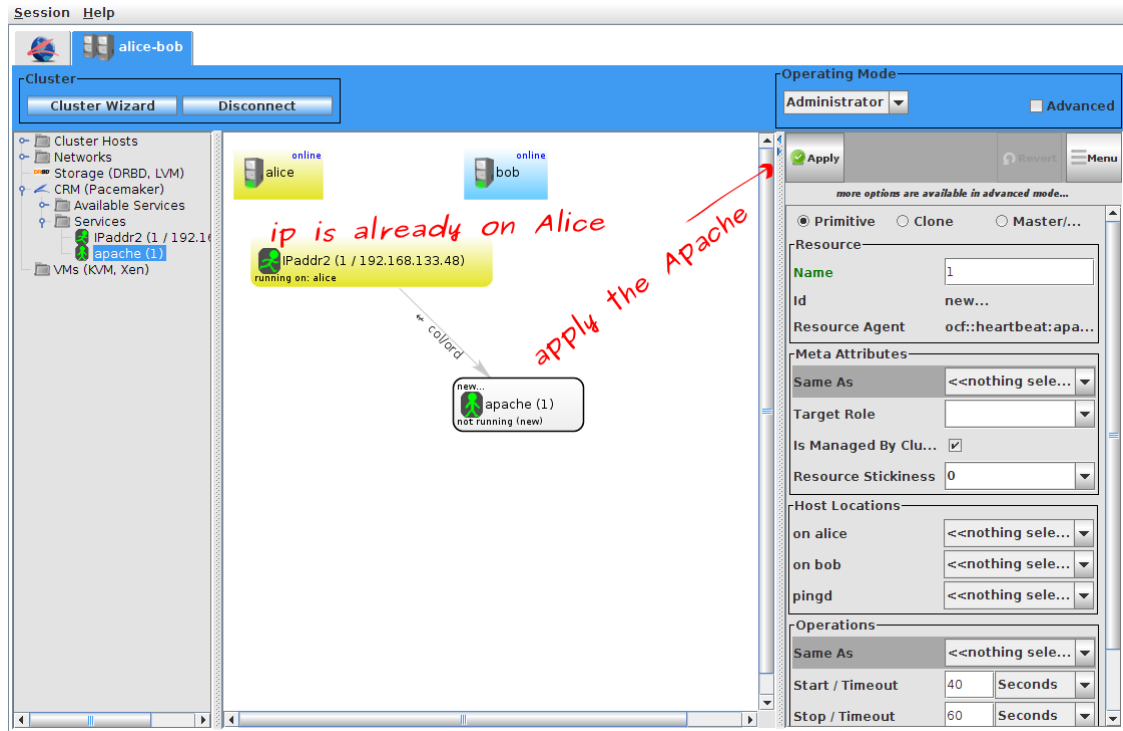


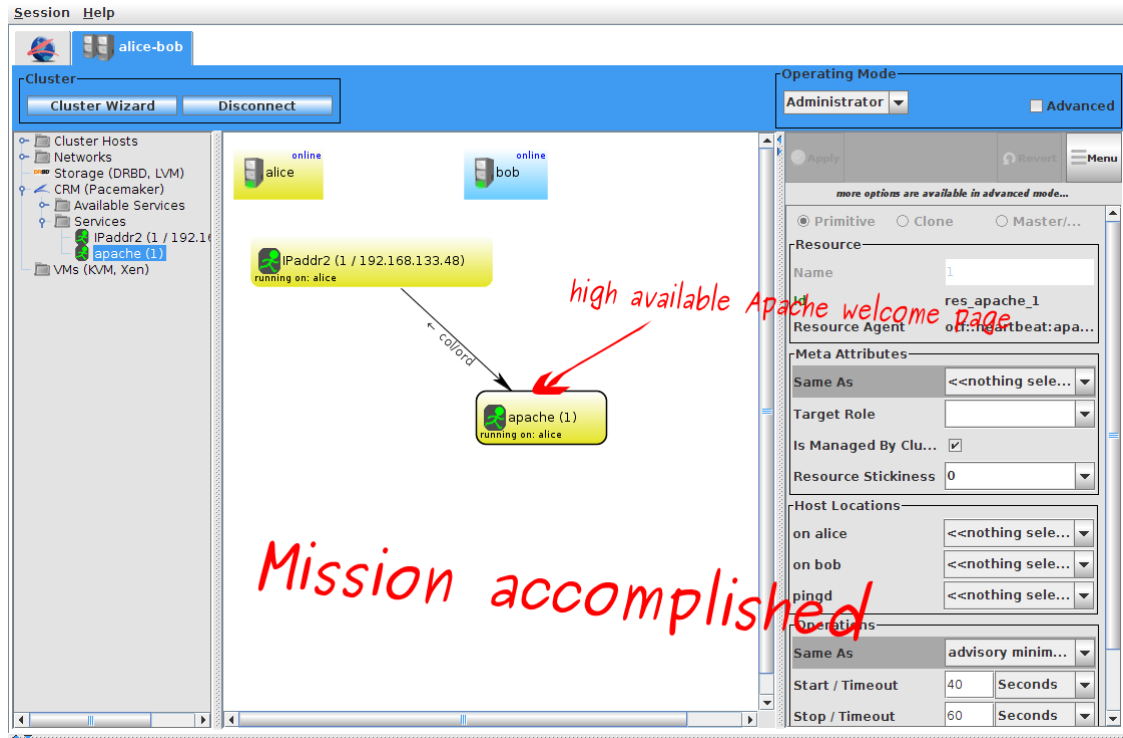
What-IF Machine / ptest



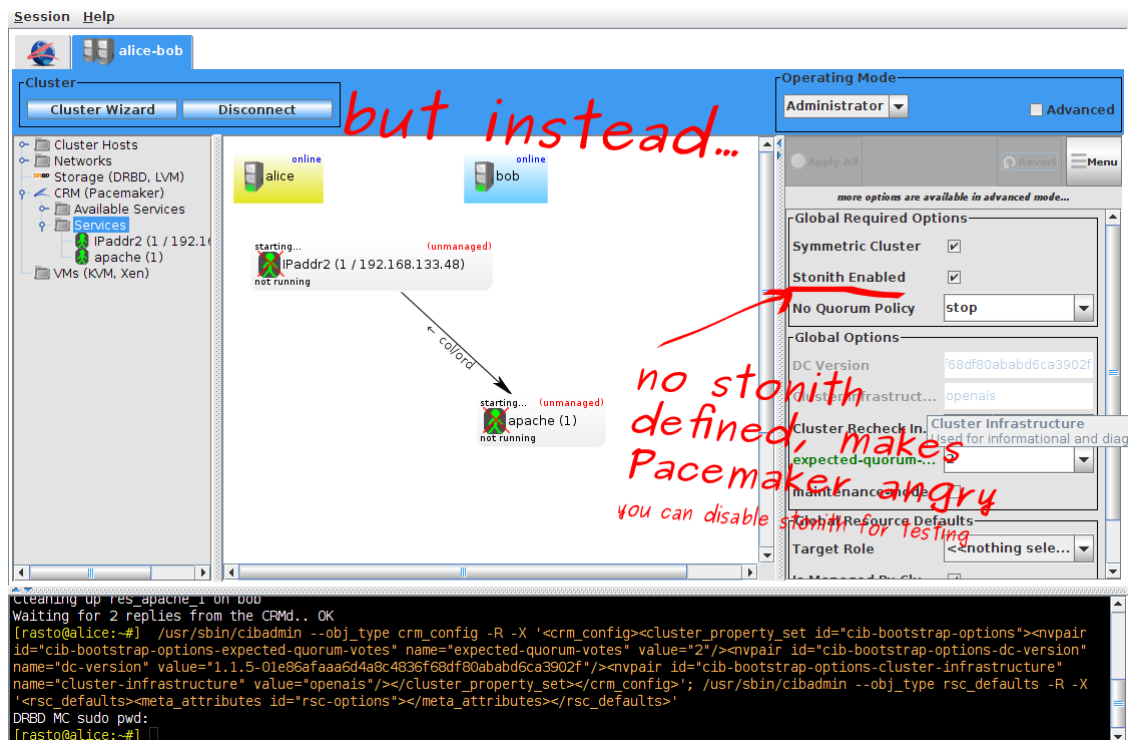
Configuring Apache



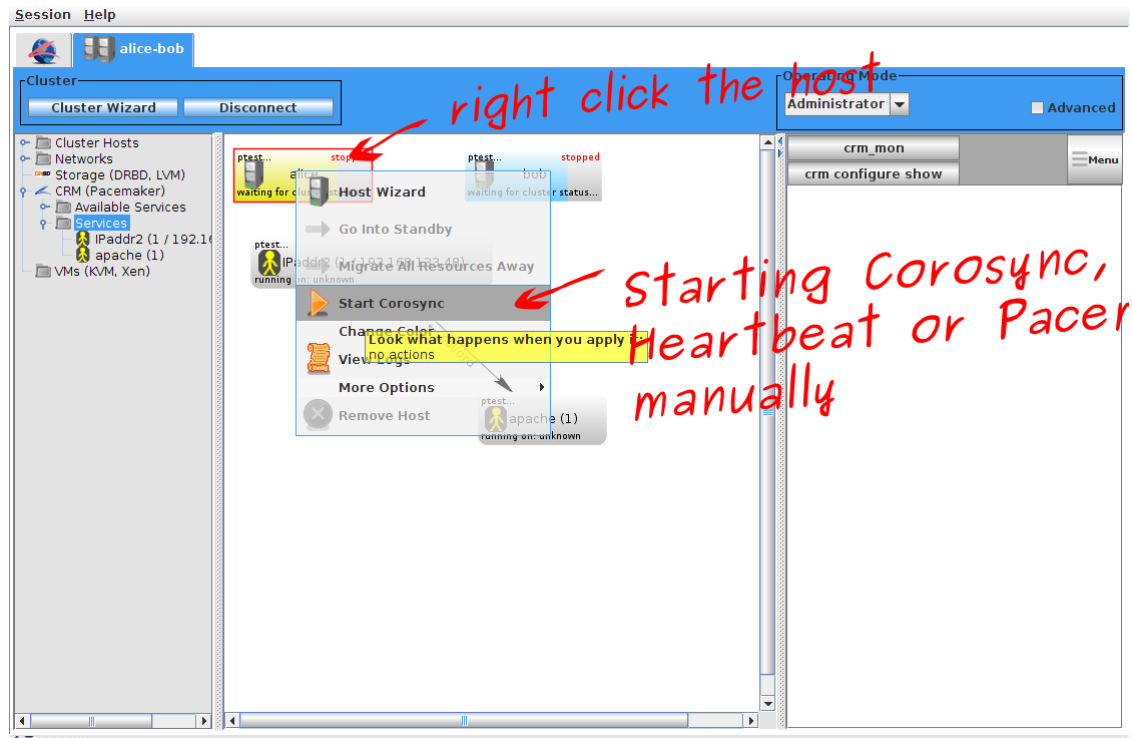




Back to STONITH



Start Cluster Software Manually



Chapter 3. Making of LCMC User Guide

